

Product data sheet

TS 5000 ISM



Overhead door closer system with guide rail for double leaf doors with closing sequence control

AREAS OF APPLICATION

- Fire and smoke protection doors
- Double leaf single-action doors
- Symmetrical and asymmetrical division of door possible
- Single-action doors up to 2800 mm hinge clearance and 1400 mm leaf width, overlength up to 3200 mm
- Minimum hinge clearance 1300 mm, minimum width of passive leaf 400 mm
- Door leaf installation hinge side

PRODUCT FEATURES

- System comprising two door closers TS 5000 and an ISM guide rail
- Closing force of EN2-6 with variable adjustment
- Can be used for right and left hand doors without conversion
- Closing sequence control holds the active leaf in the waiting position until the passive leaf is closed
- Hydraulic latching action which accelerates the door shortly before it is closed
- Closing speed can be individually adjusted
- Integrated back check, slows down doors that are thrown open forcefully
- Visual closing force display for easy control of the setting
- All functions can be adjusted from the front

TECHNICAL DATA

Productname	TS 5000 ISM
Barrier-free in accordance with DIN 18040 up to leaf width (max.) in mm	1100 mm
Leaf width (max.)	1400 mm
Type of installation	Door leaf installation hinge side
Opening angle (max.)	180 °
Minimum hinge clearance	1300 mm
Minimum passive leaf width	400 mm
Suitability for fire protection doors	Yes
Closing force adjustable	Yes, stepless
Adjustable closing speed	Yes
Latching action adjustable	Yes, via valve
Back check integrated	Yes, hydraulically adjustable
Position of closing force adjustment	Front
Visual closing force display	Yes
Hold-open function	Optional
Smoke switch integrated	No
Closing sequence control integrated	Yes

TS 5000 ISM



PART

ISM GUIDE RAIL TS 5000

With closing sequence control and levers



Designation	Description	Ident-No.	Colour	Dimensions
ISM guide rail TS 5000	continuous, with integrated closing sequence control and levers	115592	Stainless steel optic	2630 x 40 x 30 mm
ISM guide rail TS 5000	continuous, with integrated closing sequence control and levers	115549	silver-coloured	2630 x 40 x 30 mm
ISM guide rail TS 5000	continuous, with integrated closing sequence control and levers	115591	white RAL 9016	2630 x 40 x 30 mm
ISM guide rail TS 5000	continuous, with integrated closing sequence control and levers	115593	according to RAL	2630 x 40 x 30 mm

ISM GUIDE RAIL TS 5000 EXTRA LENGTH

Up to 3200 mm with closing sequence control and levers



Designation

ISM guide rail TS 5000 extra length

ISM guide rail TS 5000 extra length

CLOSER BODY TS 5000

Main body for overhead door closer with guide rail EN 2-6 with back check



Designation	Description	Ident-No.	Colour	Closing force in accordance with EN 1154	Dimensions
TS 5000 door closer	Closing force EN 2-6, with back check (without guide rail and lever)	137721	Stainless steel face plate	EN 2 - 6	287 x 47 x 60 mm
TS 5000 door closer	Closing force EN 2-6, with back check (without guide rail and lever)	027333	silver-coloured	EN 2 - 6	287 x 47 x 60 mm
TS 5000 door closer	Closing force EN 2-6, with back check (without guide rail and lever)	027335	white RAL 9016	EN 2 - 6	287 x 47 x 60 mm
TS 5000 door closer	Closing force EN 2-6, with back check (without guide rail and lever)	027336	according to RAL	EN 2 - 6	287 x 47 x 60 mm

TS 5000 ISM



CLOSER BODY TS 5000 S

Main body for overhead door closer with guide rail EN 2-6 with delayed closing and back check



Designation

TS 5000 S door closer

TS 5000 S door closer

TS 5000 S door closer

TS 5000 S door closer

TS 5000 S door closer

ACCESSORIES

CB FLEX

Carry bar for safe closing of double leaf fire protection doors



Designation

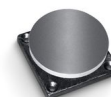
GEZE CB flex *

GEZE CB flex

GEZE CB flex

MAGNETIC COUNTERPLATE BASIC MODEL *

Standard version, rubber support



Designation

GEZE magnetic counter plate *

TS 5000 ISM



MAGNETIC COUNTERPLATE SPRING BUFFER *

Version with spring buffer

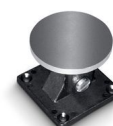


Designation

GEZE magnetic counter plate *

MAGNETIC COUNTERPLATE JOINT *

Version with adjustable joint



Designation

GEZE magnetic counter plate *

HOLD-OPEN MAGNET BASIC MODEL *

With screw attachment on the rear and without mounting plate



Designation

GEZE door hold-open magnet *

HOLD-OPEN MAGNET FLEXIBLE 185 MM *

For wall or ceiling installation with stand pipe 185 mm



Designation

GEZE door hold-open magnet *

TS 5000 ISM



HOLD-OPEN MAGNET FLEXIBLE 335 MM *

For wall or ceiling installation with stand pipe 335 mm



Designation

GEZE door hold-open magnet *

HOLD-OPEN MAGNET WALL INSTALLATION

For wall installation with base plate



Designation

GEZE door hold-open magnet

HOLD-OPEN MAGNET WALL INSTALLATION 65 MM *

For wall installation with base 65 mm



Designation

GEZE door hold-open magnet *

HOLD-OPEN MAGNET WALL INSTALLATION SURFACE-MOUNTED *

For wall installation surface mounting or floor mounting with accessories and base



Designation

GEZE door hold-open magnet *

TS 5000 ISM



HOLD-OPEN MAGNET WALL INSTALLATION FLUSH-MOUNTED *

For wall installation flush-mounted



Designation

GEZE door hold-open magnet *

MECHANICAL HOLD-OPEN UNIT

For ISM guide rail



Designation	Description	Ident-No.
Mechanical hold-open unit	for ISM-guide rail / ISM-guide rail BG, retention force adjustable, can be overridden	118437

COVER CAP DOOR CLOSER *

For TS 5000 (L)/TS 4000, can only be used for door leaf installation



Designation

Cover cap door closer *
Cover cap door closer *
Cover cap door closer *
Cover cap door closer *
Cover cap door closer *

TS 5000 ISM



GC 152 *

Smoke detector for GEZE hold-open systems



Designation

GEZE smoke detector GC 152 *

GC 153 *

Thermal detector for GEZE hold-open systems



Designation

GEZE thermal detector GC 153 *

AS 500

Manual trigger switch for the manual release of electrically controlled hold-open devices



Designation

AS 500 manual trigger switch

AS 500 manual trigger switch, glass

RSZ 7 *

Extendable smoke switch control unit for all GEZE hold-open devices

GEZE

TS 5000 ISM



Designation

RSZ 7 smoke switch control unit *

RSZ 7 smoke switch control unit *

RSZ 7 smoke switch control unit *

RSZ 7 smoke switch control unit *

FLEXIBLE OPENING RESTRICTOR

For E and R guide rails, single and double leaf



Designation

Flexible opening restrictor

COVER CAP DOOR CLOSER *

For TS 4000/5000, curved shape

Designation

Cover cap door closer *

Cover cap door closer *

COVER CAP DOOR CLOSER *

For TS 4000/5000, rectangular shape

Designation

Cover cap door closer *

Cover cap door closer *

TS 5000 ISM



INSTALLATION MATERIAL

MOUNTING PLATE GUIDE RAIL

For ISM and E-ISM guide rail



Designation

Mounting plate guide rail

Mounting plate guide rail

MOUNTING PLATE DOOR CLOSER

For TS 5000 and TS 4000 with hole pattern in accordance with DIN EN 1154 Supplement 2



Designation	Description	Ident-No.	Colour
Mounting plate door closer	for TS 5000/TS 4000 with hole pattern according to DIN EN 1154 Supplement 1	068627	white RAL 9016
Mounting plate door closer	for TS 5000/TS 4000 with hole pattern according to DIN EN 1154 Supplement 1	057956	Galvanised
Mounting plate door closer	for TS 5000/TS 4000 with hole pattern according to DIN EN 1154 Supplement 1	029176	according to RAL
Mounting plate door closer	for TS 5000/TS 4000 with hole pattern according to DIN EN 1154 Supplement 1	049185	silver-coloured
Mounting plate door closer	for TS 5000/TS 4000 with hole pattern according to DIN EN 1154 Supplement 1	137725	Stainless steel optic
Mounting plate door closer	for TS 5000/TS 4000 with hole pattern according to DIN EN 1154 Supplement 1	052351	dark bronze

MOUNTING PLATE DOOR CLOSER

for TS 5000 EFS / RFS / E-HY / TS 4000 E with hole pattern according to DIN EN 1154 Supplement 1



TS 5000 ISM



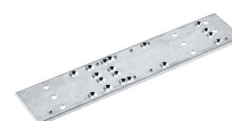
Designation

Mounting plate door closer

Mounting plate door closer

MOUNTING PLATE DOOR CLOSER *

For TS 5000 and TS 4000 with hole pattern in accordance with DIN EN 1154 Supplement 2



* The products designated above may vary in form, type, characteristics, function, or availability depending on the country. Please get in touch with your GEZE contact person if you have any questions.