

# Product data sheet

## **Slimdrive SL inclined**



Automatic linear sliding door system for use on inclined glass  
façades

### **AREAS OF APPLICATION**

- Double leaf sliding door systems
- Use in inclined glass façades in mullion-transom constructions
- Interior and exterior doors with high access frequency
- Opening widths of up to 2500 mm are possible.
- Door leaf weights of up to 100 kg per leaf, depending on inclination angle
- Suitable profile systems are fine-framed profile systems with ISO and mono glass

# Slimdrive SL inclined

## PRODUCT FEATURES

- Freely-selectable inclination angle up to 9.9° (larger angles available upon request)
- Continuous floor guide
- Very quiet running, low-wear direct current drive with a height of only 7 cm
- Integrated infrared movement detector
- Can be networked, and integrated into the building automation via open standard (BACnet)
- Independent error recognition and recording
- Adjustment options for all door movement parameters
- Freely configurable inputs and outputs for different functions
- Integrated, rechargeable battery for emergency opening in case of safety-relevant faults, such as power failure
- Self-cleaning roller carriage reduces maintenance effort and costs
- Various mechanical and electrical locks are optionally available

## TECHNICAL DATA

Productname	Slimdrive SL inclined
For 1-leaf door systems	-

## ACCESSORIES

### EFT ELBOW SWITCH \*

Stainless steel elbow switch with IP65 IP rating for activating automatic doors



### Designation

EFT elbow switch

## KFT ELBOW SWITCH

Plastic elbow switch, IP rating IP20, for activation of automatic doors



### Designation

KFT elbow switch

KFT elbow switch

## LS 990 ELBOW SWITCH

Elbow switch for activating automatic doors



### Designation

LS 990 elbow switch

LS 990 elbow switch

LS 990 elbow switch

LS 990 elbow switch

## LED SENSOR FOOT SWITCH \*

Switch for activating automatic doors



### Designation

LED sensor foot switch \*

## Slimdrive SL inclined



### LED SENSOR SWITCH \*

Switch for activating automatic doors



#### Designation

LED sensor switch \*

LED sensor switch glass \*

### AS 500 ROCKER PUSH BUTTON

Activation of all GEZE automatic doors



#### Designation

AS 500 rocker push button

### PULL SWITCH \*

For triggering calls in barrier-free bathrooms or WCs



#### Designation

Pull switch

### GC 365

Combined detector for activating and protecting automatic sliding doors with four different infrared light curtain configuration settings



---

## Designation

Combined detector GC 365 R

Combined detector GC 365 SF

---

## DPS

Display programme switch for setting the mode of operation for automatic doors



---

## Designation

Display programme switch DPS with OFF switch

DPS with OFF switch and SCT key switch

---

## GC 341 \*

Safety sensor for automatic doors



---

## Designation

GC 341 \*

---

## MINI LED SENSOR SWITCH \*

Activation of all GEZE automatic doors



---

## Designation

LED sensor switch 20 mm \*

---

# Slimdrive SL inclined



## MPS

Mechanical programme switch for setting the mode of operation for automatic doors



### Designation

MPS mechanical programme switch

MPS ST mechanical programme switch

## AS 500 \*

AS emergency stop switch with glass pane and five interchangeable labels ("Nottaster öffnen", "Notschalter", "Emergency switch", "Tür schließen" and without text)



### Designation

AS 500 emergency stop switch

## SCT STAINLESS STEEL \*

Key switch stainless steel for authorised activation and for changing the mode of operation of automatic doors



Designation	Description	Ident-No.	Colour	Dimensions	Type of installation
Key switch, switching operation without Euro profile half cylinder	Mounting with claws or screws, one-sided switching operation (key can be removed in the central position), cover can only be removed with key, light alloy housing, IP rating IP54	098870	silver-coloured	79 x 79 x 12.5 mm	Flush-mounted installation
Key switch with Euro profile half cylinder and three keys	adjustable stay-put or switching operation on both sides (key can be pulled out in the central position), cover can only be removed with key, light alloy housing, IP rating IP54	137056	silver-coloured		Surface-mounted installation
Key switch, stay-put without Euro profile half cylinder	Attachment with claws or screws, stay-put on one side (key can be removed in the central position), cover can only be removed with key, light alloy housing, IP rating IP54	111357	silver-coloured	79 x 79 x 12 mm	Flush-mounted installation

## SCT KEY SWITCH

Key switch for authorised activation and for changing the mode of operation of automatic doors



### Designation

SCT key switch

SCT key switch

## SCT 221

Key switch for authorised activation and changing the mode of operation of automatic doors, surface and flush-mounted



### Designation

SCT 221 key switch

SCT 221 key switch

## TPS

Keypad programme switch for setting the mode of operation for automatic doors

### Designation

TPS keypad programme switch

TPS keypad programme switch and SCT key switch

## Slimdrive SL inclined



### WRM-24 \*

Receiving module for activating automatic doors and window drives with 24 V DC

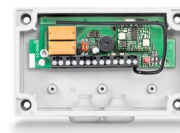


#### Designation

WRM-24 receiving module \*

### WRM-24B \*

Receiving module for activating automatic doors and window drives with 24 V DC



#### Designation

WRM-24B receiving module \*

### WTH \*

Remote control for activating GEZE automatic doors and window drives via the GEZE wireless programme



#### Designation

WTH-2 remote control, 2 channel \*

WTH-4 remote control, 4 channel \*

WTH-1 remote control, 1 channel \*



## Slimdrive SL inclined



### AS 500

Manual trigger switch for the manual release of electrically controlled hold-open devices



#### Designation

AS 500 manual trigger switch

AS 500 manual trigger switch, glass

### MULTI-FUNCTION RELAY \*

Digital settable multifunction time relay



#### Designation

Multifunction relay 10-250V AC/DC \*

### GC 307+ \*

Non-contact proximity switch for activating automatic doors



#### Designation

GC 307+ (hand icon) \*

GC 307+ (WC icon) \*

GC 307+ (hand icon) \*

GC 307+ (WC icon) \*

## GC 339+ \*

Safety sensor for automatic sliding, revolving, and curved sliding doors, as well as for windows



### Designation

GC 339+ \*

## GC 363+ \*

Combined detector for activating and protecting automatic sliding doors with ten different infrared light curtain configuration settings



Designation	Description	Ident-No.	Colour	Dimensions	Output
GC 363+ R *	Combined detector for the activation and safeguarding of automatic sliding doors	203854	black	270 x 58 x 58 mm	Potential-free relay contact
GC 363+ SF *	Combined detector for the activation and safeguarding of automatic sliding doors	203856	black	270 x 58 x 58 mm	

## DIGITAL PROGRAMMABLE TIMER \*

For time-controlled changes of modes of operation on automatic doors



## E2 ROCKER PUSH BUTTON

Activation of all GEZE automatic doors



### Designation

E2 rocker push button

## Slimdrive SL inclined



---

### LS 990 ROCKER PUSH BUTTON

Activation of all GEZE automatic doors



#### Designation

LS 990 rocker push button

---

### SERVICE INTERFACE \*

Faster diagnosis and maintenance



---

\* The products designated above may vary in form, type, characteristics, function, or availability depending on the country. Please get in touch with your GEZE contact person if you have any questions.