

# Product data sheet

# Perlän 140 set for glass leaves



Sliding door fitting for glass leaves and ceiling installation

## AREAS OF APPLICATION

→ Suitable for sliding leaves up to 140 kg

# Perlan 140 set for glass leaves



## PRODUCT FEATURES

→ Sliding door fitting for glass and timber leaves with leaf weights up to 140 kg

## TECHNICAL DATA

Productname	Perlan 140 set for glass leaves
Corrosion protection class	2
Glass thickness	8 - 12.76 mm
Colour	EV1

## VARIANTS / ORDER INFO

Designation	Description	Ident-No.	Colour	Leaf width (min.)	Leaf width (max.)
Perlan 140 set for glass leaves	For ceiling installation with glass clamping plate individual cover, up to 140 kg leaf weight	134844	Stainless steel optic	500 mm	1040 mm
Perlan 140 set for glass leaves	For ceiling installation with glass clamping plate individual cover, up to 140 kg leaf weight	134834	EV1	500 mm	1040 mm
Perlan 140 set for glass leaves	For ceiling installation with glass clamping plate individual cover, up to 140 kg leaf weight	134833	EV1	500 mm	840 mm
Perlan 140 set for glass leaves	For ceiling installation with glass clamping plate individual cover, up to 140 kg leaf weight	134845	Stainless steel optic	500 mm	1240 mm
Perlan 140 set for glass leaves	For ceiling installation with glass clamping plate individual cover, up to 140 kg leaf weight	134835	EV1	500 mm	1240 mm
Perlan 140 set for glass leaves	For ceiling installation with glass clamping plate individual cover, up to 140 kg leaf weight	134843	Stainless steel optic	500 mm	840 mm

## PART

### FLOOR GUIDE FOR GLASS LEAF

Floor guide with variable adjustment for glass thicknesses 8, 10 and 12 mm



Designation	Description	Ident-No.	Colour	Glass thickness
Floor guide for glass leaf (adjustable)	with variable adjustment for glass thickness 8-13.5 mm, with frieze band for noise reduction with structured glass surfaces, without attachment material	120417	silver-coloured	8 - 13.5 mm

# Perlan 140 set for glass leaves



## END STOP PERLAN 140 (ALSO KS)

End stop for sliding leaves also suitable for outdoor use



Designation	Description	Ident-No.
End stop Perlan 140 (also KS)	Steel parts made of stainless steel	119362

## END CAP PERLAN TRACK

End cap Perlan track



Designation	Ident-No.	Colour
End cap Perlan track	119649	black

## HOLD-OPEN SPRING

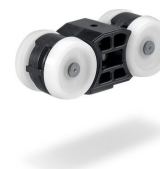
Hold-open spring for Perlan 140 end stop



Designation	Ident-No.
Hold-open spring	064242

## ROLLER CARRIAGE WITHOUT SUSPENSION BOLT

Roller carriage for leaf weights up to 140 kg



Designation	Description	Ident-No.
Roller carriage without suspension bolt	up to 140 kg leaf weight	064248

# Perlan 140 set for glass leaves



## TRACK PERLAN 140

Track for sliding door fitting



Designation	Description	Ident-No.	Colour
Track Perlan 140	with countersunk drill holes (prepared for Perlan SoftStop)	142518	EV1
Track Perlan 140	with countersunk drill holes (prepared for Perlan SoftStop)	128660	EV1
Track Perlan 140	with countersunk drill holes (prepared for Perlan SoftStop)	128662	Stainless steel optic
Track Perlan 140	with countersunk drill holes (prepared for Perlan SoftStop)	135061	Stainless steel optic
Track Perlan 140	with countersunk drill holes (prepared for Perlan SoftStop)	135048	EV1
Track Perlan 140	with countersunk drill holes (prepared for Perlan SoftStop)	135050	Stainless steel optic
Track Perlan 140	with countersunk drill holes (prepared for Perlan SoftStop)	135049	Stainless steel optic
Track Perlan 140	with countersunk drill holes (prepared for Perlan SoftStop)	135047	EV1
Track Perlan 140	with countersunk drill holes (prepared for Perlan SoftStop)	142519	EV1
Track Perlan 140	with countersunk drill holes (prepared for Perlan SoftStop)	135046	EV1