

Product data sheet

E 3000



Spindle drive for particularly heavy roof windows

AREAS OF APPLICATION

- Very heavy windows in the roof area
- Natural ventilation, smoke and heat extraction system, natural smoke and heat extraction device (SHEV)
- Use in the exhaust air system
- Installation on wooden, PVC or metal windows
- Frame installation

PRODUCT FEATURES

- Very high tensile and compressive force
- Robust and corrosion-resistant design with built-in end position damping
- Aluminium housing for highest design demands
- Extensive brackets allow versatile installation on main or secondary closing edges
- Synchronisation of max. four drives without external control unit
- Tested in accordance with EN 12101-2 (natural smoke and heat extraction devices)

TECHNICAL DATA

Productname	E 3000
Opening speed RWA	7.8 mm/s
Opening speed ventilation	7.8 mm/s
Force of pressure (max.)	3000 N
Holding force (max.)	25000 N
Tensile force	3000 N
Voltage at operation	24 V ± 25 %
Operating voltage	24 V DC
Power consumption	5 A
Power consumption	91 W
Residual ripple	20 %
Duty rating	30 %
Connector cable length	3 m
Special length of connector cable	5 m, 10 m
Min. core cross section	1 mm ²
Number of cores	3 cores
Service temperature	-5 - 75 °C
IP rating	IP54
protection rating	III
Synchronising function	Yes
Type of additional locking mechanism	Locking drive
Type of stroke shortening	Factory setting
End position cut-off extended	electronic
End position cut-off retracted	electronic
Overload cut-off	Yes
Complete opening within 60 s	yes, up to 300 mm stroke
SHEV tested	Yes
SHEV additional information	yes, up to 300 mm stroke
Number synchronisation drive units	4
KNX ability	No

OUTWARD-opening roof window

Yes

VARIANTS / ORDER INFO

Designation	Description	Ident-No.	Colour	Stroke	Operating voltage
E 3000		162391	EV1	1000 mm	24 V DC
E 3000		162389	EV1	500 mm	24 V DC
E 3000		162390	EV1	750 mm	24 V DC
E 3000 special version	Can be configured: Stroke, cable length, colour	162392	according to RAL		24 V DC
GEZE E 3000 Syncro *	Comprising two drives with integrated synchronous control unit	162395	EV1	1000 mm	24 V
GEZE E 3000 Syncro *	Comprising two drives with integrated synchronous control unit	162393	EV1	500 mm	24 V
GEZE E 3000 Syncro *	Comprising two drives with integrated synchronous control unit	162394	EV1	750 mm	24 V
GEZE E 3000 Syncro special version *	Can be configured: Stroke, cable length, colour, Syncro 2-4	162396	according to RAL		24 V

ACCESSORIES**ROOF WINDOW BRACKET E 3000 ***

For installation of the E 1500 S and E 3000 spindle drives



Designation	Ident-No.	Colour
Roof window bracket E 3000	121292	according to RAL
Roof window bracket E 3000	121291	white RAL 9016
Roof window bracket E 3000	121280	silver-coloured

BRACKET MOUNT E 3000 NSK AP *

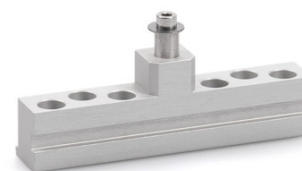
For roof window installation of the E 1500 S and E 3000 spindle drives



Designation	Description	Ident-No.	Colour
Bracket mount E 3000 NSK AP *	suitable for installation on the secondary closing edge of roof windows	140714	silver-coloured

LEAF BRACKET E 3000 NSK HE *

For roof window installation of the E 1500 S and E 3000 spindle drives



Designation	Description	Ident-No.	Colour
Leaf bracket E 3000 NSK HE *	suitable for installation on the secondary closing edge of roof windows (Heroal 85 D)	136206	EV1

CONICAL SLEEVE E 3000

For installation of the E 1500 S and E 3000 spindle drives



Designation	Description	Ident-No.	Colour
Conical sleeve E 3000	for installation of E 1500 S and E 3000	121275	white RAL 9016
Conical sleeve E 3000	for installation of E 1500 S and E 3000	121276	according to RAL
Conical sleeve E 3000	for installation of E 1500 S and E 3000	121274	silver-coloured

LEAF BRACKET E 1500/ E 3000 NSK AP *

For installation of the E 1500 N, E 1500 S, E 3000 and E 250 NT spindle drives

**LEAF BRACKET E 3000 ***

For installation of the E 1500 S and E 3000 spindle drives



Designation	Ident-No.	Colour
Leaf bracket E 3000 *	121277	silver-coloured
Leaf bracket E 3000 *	121279	according to RAL
Leaf bracket E 3000 *	121278	white RAL 9016

LEAF BRACKET E 3000 HSK HE *

For installation of the E 1500 S and E 3000 spindle drives



Designation	Description	Ident-No.	Colour
Leaf bracket E 3000 HSK HE *	suitable for installation on the main closing edge of roof windows (Heroal 085 D)	136207	EV1

LEAF BRACKET E 3000 NSK A-HU *

For installation of the E 1500 S and E 3000 spindle drives



Designation	Description	Ident-No.	Colour
Leaf bracket E 3000 NSK A-HU	suitable for installation on the secondary closing edge of roof windows (Alcoa AA 100, Hueck VF 50/60)	136205	EV1

LEAF BRACKET E 3000 NSK W-HU *

For installation of the E 1500 S and E 3000 spindle drives



Designation	Description	Ident-No.	Colour
Leaf bracket E 3000 NSK W-HU *	suitable for installation on the secondary closing edge of roof windows (Wicona WT 50/60, Hueck 85 E)	136204	EV1

BRACKET E 3000 NSK *

For roof window installation of the E 1500 S and E 3000 spindle drives



Designation	Description	Ident-No.	Colour
Bracket E 3000 NSK *	suitable for installation on the secondary closing edge of roof windows. Supplied by GEZE without conical sleeve ID no. 121274	130525	silver-coloured

BRACKET E 3000 NSK S *

For roof window installation of the E 1500 S and E 3000 spindle drives



Designation	Description	Ident-No.	Colour
Bracket E 3000 NSK S *	suitable for installation on the secondary closing edge of roof windows (Schüco AWS57 RO). Supplied by GEZE without conical sleeve ID no. 121274	136183	silver-coloured

BRACKET MOUNT E 3000 HSK

For roof window installation of the E 1500 S and E 3000 spindle drives



Designation	Description	Ident-No.	Colour
Bracket mount E 3000 HSK	suitable for installation on the main closing edge of roof windows	136202	silver-coloured

BRACKET MOUNT E 3000 NSK *

For roof window installation of the E 1500 S and E 3000 spindle drives



Designation	Description	Ident-No.	Colour
Bracket mount E 3000 NSK *	suitable for installation on the secondary closing edge of roof windows	136203	silver-coloured

POWER SUPPLY NT 6.25 A-24 V HS *

24 V power supply for top hat rail mounting



Designation	Description	Ident-No.	Colour	Dimensions	Operating voltage
Power supply NT 6.25 A-24 V HS *	Output voltage 24 V DC / W x H x D: 72 x 95 x 66.5 mm / Installation on top hat rail, 4 division units	192113	grey	72 x 95 x 66.5 mm	230 V DC +/- 10%

* The products designated above may vary in form, type, characteristics, function, or availability depending on the country. Please get in touch with your GEZE contact person if you have any questions.